

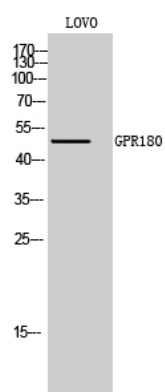


# GPR180 Polyclonal Antibody

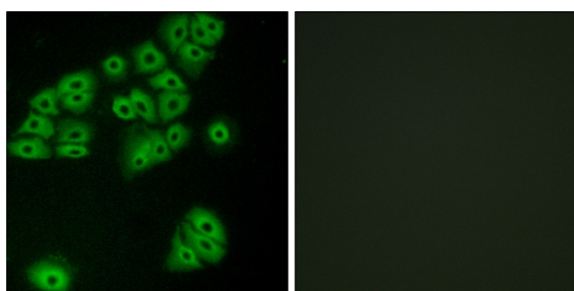
|                                  |   |
|----------------------------------|---|
| <b>Catalog No</b>                | YP-Ab-13324   |
| <b>Isotype</b>                   | IgG   |
| <b>Reactivity</b>                | Human;Mouse   |
| <b>Applications</b>              | WB;IHC;IF;ELISA   |
| <b>Gene Name</b>                 | GPR180  |
| <b>Protein Name</b>              | Integral membrane protein GPR180  |
| <b>Immunogen</b>                 | The antiserum was produced against synthesized peptide derived from human GPR180. AA range:241-290  |
| <b>Specificity</b>               | GPR180 Polyclonal Antibody detects endogenous levels of GPR180 protein.   |
| <b>Formulation</b>               | Liquid in PBS containing 50% glycerol, 0.5% BSA and 0.02% sodium azide.   |
| <b>Source</b>                    | Polyclonal, Rabbit,IgG  |
| <b>Purification</b>              | The antibody was affinity-purified from rabbit antiserum by affinity-chromatography using epitope-specific immunogen.   |
| <b>Dilution</b>                  | Western Blot: 1/500 - 1/2000. Immunohistochemistry: 1/100 - 1/300. Immunofluorescence: 1/200 - 1/1000. ELISA: 1/10000. Not yet tested in other applications.  |
| <b>Concentration</b>             | 1 mg/ml   |
| <b>Purity</b>                    | ≥90%  |
| <b>Storage Stability</b>         | -20°C/1 year  |
| <b>Synonyms</b>                  | GPR180; ITR; Integral membrane protein GPR180; Intimal thickness-related receptor   |
| <b>Observed Band</b>             | 50kD  |
| <b>Cell Pathway</b>              | Membrane ; Multi-pass membrane protein .  |
| <b>Tissue Specificity</b>        | Cerebellum,Cervix,Pancreas,   |
| <b>Function</b>                  |   |
| <b>Background</b>                | This gene encodes a protein that is a member of the G protein-coupled receptor superfamily. This protein is produced predominantly in vascular smooth muscle cells and may play an important role in the regulation of vascular remodeling. [provided by RefSeq, Jul 2008], |
| <b>matters needing attention</b> | Avoid repeated freezing and thawing!  |
| <b>Usage suggestions</b>         | This product can be used in immunological reaction related experiments. For more information, please consult technical personnel.   |



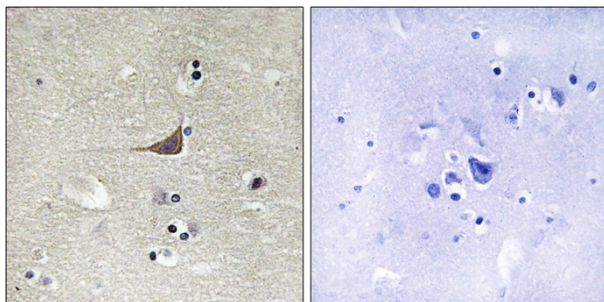
## Products Images



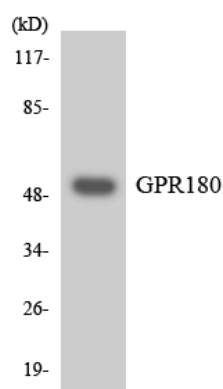
Western Blot analysis of LOVO cells using GPR180 Polyclonal Antibody



Immunofluorescence analysis of A549 cells, using GPR180 Antibody. The picture on the right is blocked with the synthesized peptide.



Immunohistochemistry analysis of paraffin-embedded human brain tissue, using GPR180 Antibody. The picture on the right is blocked with the synthesized peptide.



Western blot analysis of the lysates from Jurkat cells using GPR180 antibody.